



**valke**

**OWNER'S MANUAL**



# WARNING



## READ OWNERS MANUAL BEFORE USING.

This is not a toy. Misuse may cause serious injury or death. Eye protection designed specifically for paintball must be worn by the user and persons within range. Recommend 18 years of age or older to purchase. Persons under 18 years of age must have adult supervision.

### Rules of Safe Marker Handling

1. Treat every marker as if it were loaded.
2. Never look down the barrel of a paintball marker.
3. Keep your finger off the trigger until ready to shoot.
4. Never point the marker at anything you don't wish to shoot.
5. Keep the marker on "safe" until ready to shoot.
6. Keep the barrel blocking device in/ on the marker's muzzle when not shooting.
7. Always remove paintballs and propellant source before disassembly.
8. After removing propellant source, point marker in safe direction and discharge until marker is degassed.
9. Store the marker unloaded and degassed in a secure place.
10. Follow warnings listed on propellant source for handling and storage.
11. Do not shoot at fragile objects such as windows.
12. Every person within range must wear eye, face and ear protection designed specifically to stop paintballs and meeting ASTM standard F1776.
13. Always measure your marker's velocity before playing paintball and never shoot at velocities in excess of 91.44 meters (300 feet-per-second).

## VALKEN PAINTBALL SW-1™ Paintball Marker

Thank you for purchasing the SW-1 Paintball Marker by Valken Paintball. The SW-1 was designed to be a durable paintball marker for players of all experience levels in all conditions and be easy to maintain.

### SW-1 Specifications

Caliber.....	0.68
Action.....	Semi-Automatic
Barrel.....	Removable 8" ported
Power.....	CO2 or Compressed Air (High Output)
Construction.....	Aluminum & Polymer
Velocity.....	Up to 300 Feet Per Second (FPS)
Effective Range.....	150+ feet

# Using your SW-1 Paintball Marker

## Trigger Safety Pin

Before beginning setup, locate the trigger safety pin above the trigger. Make sure the trigger safety is pushed in on the left hand side of the marker so that the marker is not accidentally discharged during setup.



SAFETY ON



SAFETY OFF

## Barrel Installation

1. Make sure the marker is degassed, hopper removed, no paintballs in the feed port or breech and the safety is set to “safe” mode.
2. While pointing marker in a safe direction, place the threaded end of the barrel into the front opening of the marker body.
3. Turn the barrel clockwise until it stops. Do not turn the barrel with too much force, just allow the threads to draw the barrel in until it stops. Do not over tighten.
4. Immediately install a barrel blocking device. This can be a barrel plug or other such device that prevents the accidental discharge of a paintball.

## Feedneck Installation

1. Rotate the feedneck lock lever down into the unlocked position.
2. Slide the feedneck onto the mounting rail from the rear all the way to the front of the mounting rail.
3. Rotate the lock lever up into the locked position until it clicks into place.

## Loader Installation

1. Unclamp the feedneck clamp lever.
2. Insert the loader into the opening of the feedneck until it bottoms out.
3. Align the loader so that the lid is to the rear.

4. Clamp down the loader with the clamp lever.
5. If necessary, adjust the clamp lever adjustment screw using a 3/32” allen wrench so that the loader is snug, but DO NOT overtighten.

## Air Cylinder Installation

1. With a barrel blocking device properly installed and while pointing the marker in a safe direction, cock the marker by pulling the cocking knob located on the left side of the marker back until it clicks and stops. Release the cocking knob and the marker is now cocked.
2. Locate the air source adapter at the base of the grip frame.
3. Position the marker so that the air source adapter is pointed upwards while keeping the barrel of the marker pointed down.
4. Insert the threaded cylinder valve end into the adapter.
5. Without pushing the cylinder, slowly twist the cylinder clockwise and allow the threads to draw the cylinder into the marker until it stops. Your marker is now charged.

## Firing Your SW-1

1. Make sure eye protective devices designed specifically for paintball use are worn by the operator and anyone within range.
2. While pointing the marker in a safe direction, remove the barrel blocking device.
3. Push the trigger safety to the “fire” mode by pushing it in on the right side of the marker. The red o-ring will now be visible on the left side and the SW-1 is in “fire” mode.
4. Aim your SW-1 at a safe target and pull the trigger.
5. When finished shooting, return the trigger safety to the “safe” mode and replace the barrel blocking device.

## Velocity Adjustment

\*Note:

- a. Do not adjust the velocity without using a chronograph designed to measure the velocity of a paintball. Adjusting the velocity without using a paintball-specific chronograph may cause unsafe paintball speeds which may result in serious injury or death.
- b. Make sure eye protective devices designed specifically for paintball use are worn by the operator and anyone within range.



1. While pointing the marker in a safe direction, remove the barrel blocking device.
2. Aim your SW-1 barrel over the chronograph.
3. Set the trigger safety to fire by pushing the safety pin in on the right side of the marker.
4. Pull the trigger once and observe the reading on the chronograph.
5. Locate the velocity adjuster screw recessed on the left side of the SW-1 receiver.
6. Using a 5/32" allen wrench, turn the screw clockwise to reduce the velocity, or counterclockwise to increase the velocity of the paintballs discharged from the marker.
7. When finished, set the trigger safety pin to safe mode by pushing the safety pin in on the left side of the marker, and replace the barrel blocking device.

Note: When adjusting the velocity, make small adjustments, testing after each adjust-

ment. When reducing velocity, it may be necessary to make several adjustments before a reduction in velocity is achieved.

## Storing your SW-1 Marker

When play is done for the day, proper storage of the SW-1 is essential to maintain proper function and extend the life of the marker.

1. Make sure eye protective devices designed specifically for paintball use are worn by the operator and anyone within range.
2. Empty the paintballs from the loader and remove the loader from the feed neck.
3. Point the marker in a safe direction and set the trigger safety pin to "fire" mode.
4. Remove the barrel blocking device and fire the marker in a safe direction until it is empty of paintballs.
5. Unscrew and remove the barrel.
6. Slowly unscrew and remove the air cylinder. Make sure the air cylinder does not separate from its valve/regulator.
7. Aim the SW-1 in a safe direction and pull the trigger once to move the cocking bolt to the forward position.
8. Set the safety to "safe" mode.
9. The marker is now ready to be cleaned or put away for future use.

## Disassembly

Always make sure the SW-1 is unloaded, degassed, and the firing bolt is in the uncocked (forward) position before beginning disassembly.



[www.valkenpaintball.com](http://www.valkenpaintball.com)

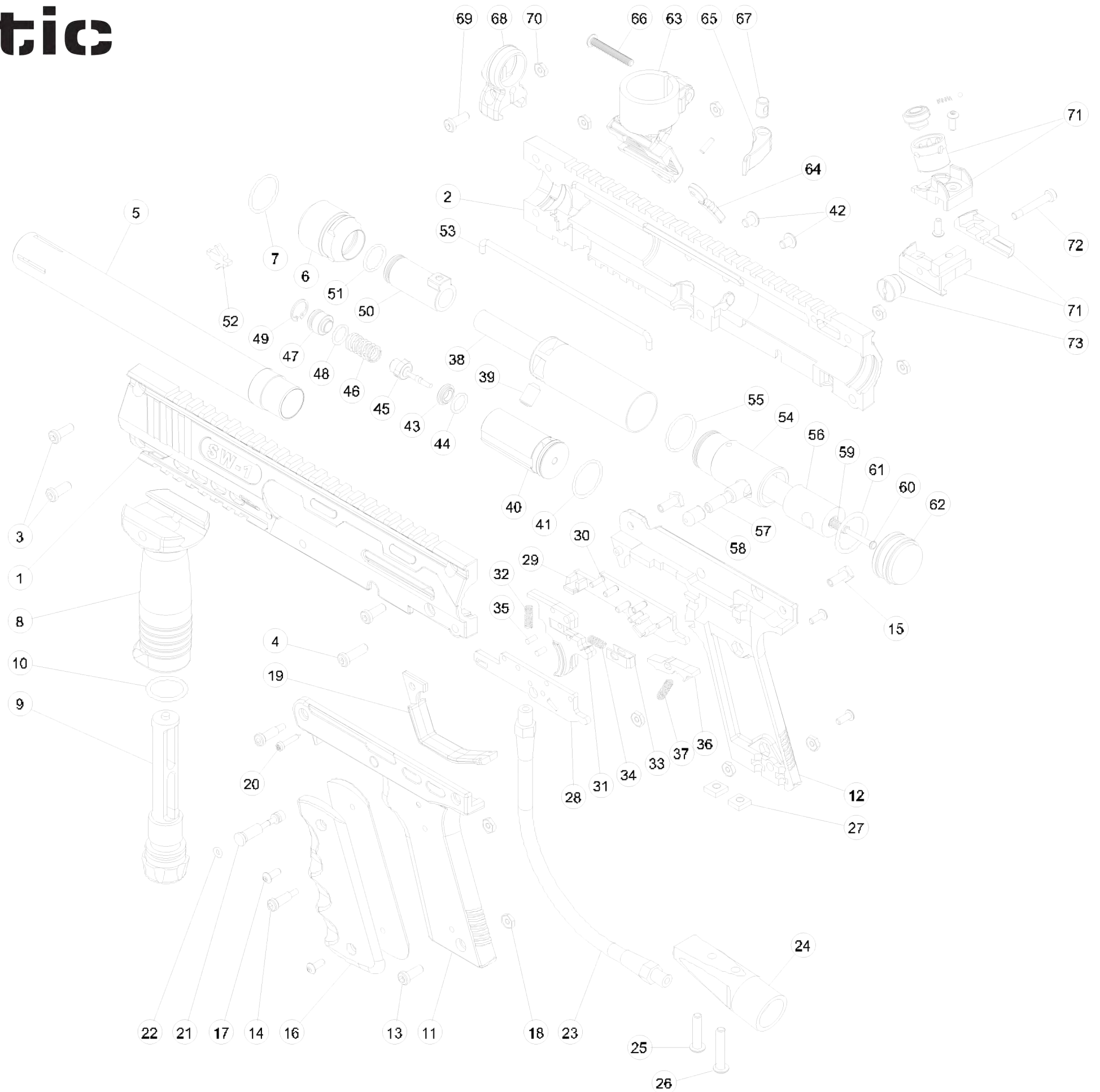
(856) 812.2800

597 Mantua Blvd., Sewll, NJ 08080

# SW1™ Schematic

PART #	PART DESCRIPTION
1	Receiver Left
2	Receiver Right
3	Short Receiver Screw
4	Long Receiver Screw
5	Barrel
6	Barrel Thread Adapter
7	Barrel Thread Adapter O-Ring
8	Foregrip
9	Foregrip Locking Stem
10	Foregrip Locking Stem O-Ring
11	Frame Left
12	Frame Right
13	Frame Screw
14	Frame Retention Screw
15	Frame Retention Nut Stem
16	Grip
17	Grip Screw
18	Grip Nut
19	Trigger Guard
20	Trigger Guard Screw
21	Trigger Safety Pin
22	Trigger Safety Pin O-Ring
23	Steel Braided Hose
24	Air Source Adapter (ASA)
25	Short ASA Screw
26	Long ASA Screw
27	ASA Mounting Nut
28	Trigger Plate Left
29	Trigger Plate Right
30	Trigger Plate Pin
31	Trigger
32	Trigger Spring
33	Trigger Catch
34	Trigger Catch Spring
35	Trigger Catch Pin
36	Sear
37	Sear Spring

PART #	PART DESCRIPTION
38	Valve Tube
39	Velocity Screw
40	Valve Housing
41	Valve O-Ring
42	Valve Screws
43	Cup Seal Seat
44	Cup Seal Seat O-Ring
45	Cup Seal
46	Cup Seal Spring
47	Spring Stop
48	Spring Stop O-Ring
49	Retaining Ring
50	Bolt
51	Bolt O-Ring
52	Ball Detent
53	Connecting Rod
54	Hammer
55	Hammer O-Ring
56	Hammer Insert
57	Hammer Cocking Pin
58	Hammer Cocking Pin Cover
59	Hammer Spring
60	Hammer Spring Strut
61	Hammer Bumper O-Ring
62	Rear Body Plug
63	Feedneck Housing
64	Feedneck Housing Lock Lever
65	Feedneck Clamp Lever
66	Feedneck Clamp Screw
67	Feedneck Clamp Nut Stem
68	Front Sight
69	Front Sight Screw
70	Front Sight Nut
71	Rear Sight Assembly
72	Rear Sight Stem Screw
73	Rear Sight Thumb Nut





[www.valkenpaintball.com](http://www.valkenpaintball.com)

(856) 812.2800